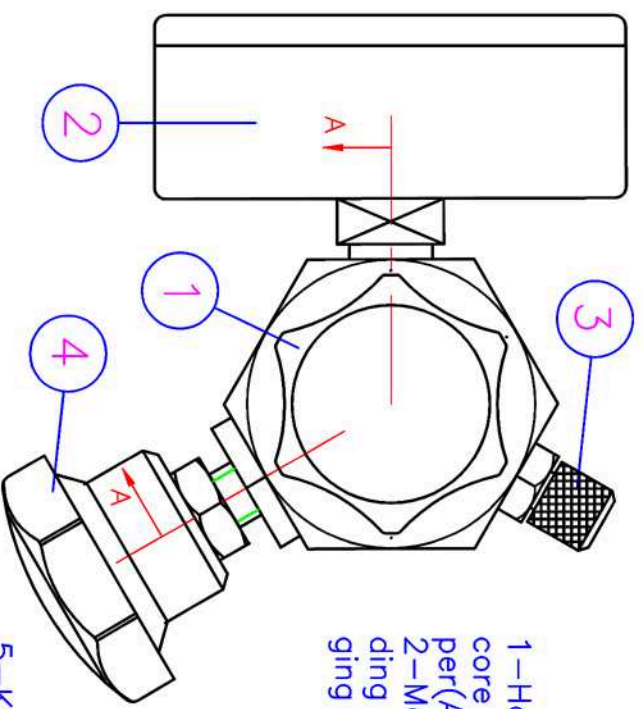
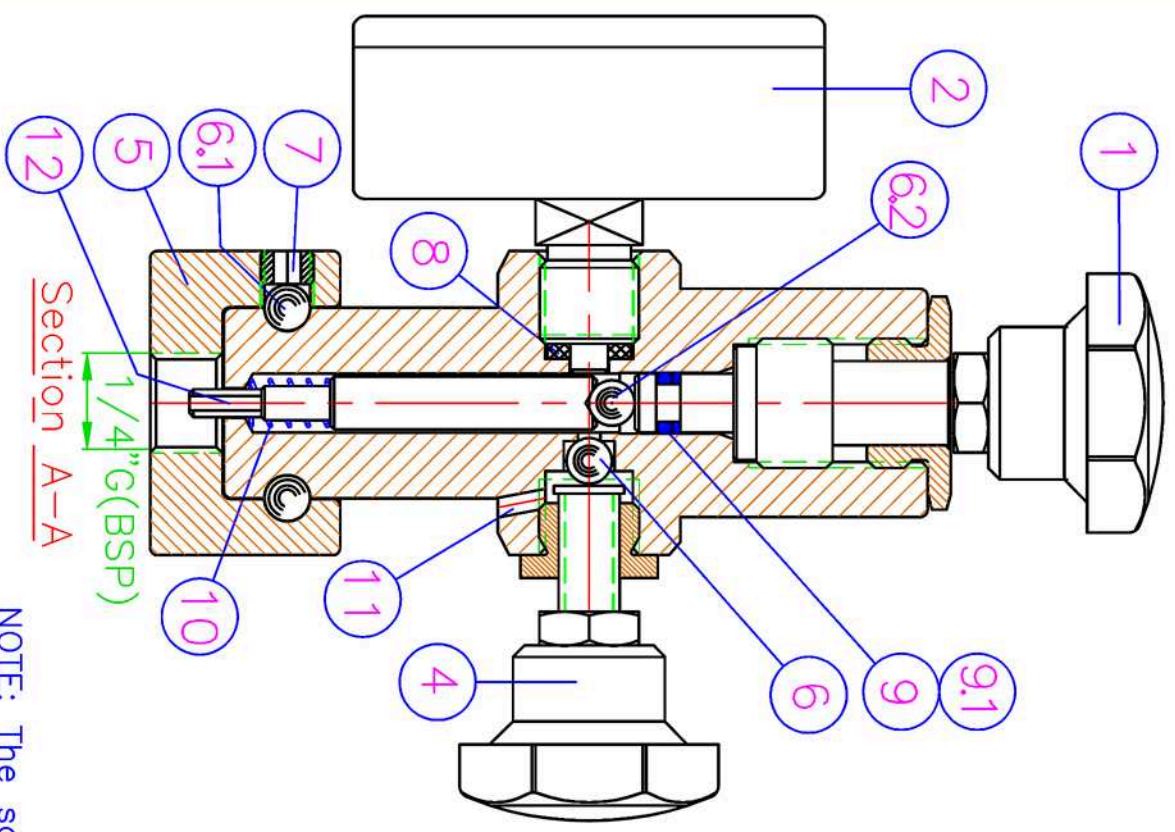


Body & nuts material: 1.0718 (electroless nickel coating)



- 1-Handle for open the core in the Pulsation Damper(Accumulator)inflating valve
- 2-Manometer(scales according to the different charging pressures)

- 3-Check valve to connect with the gas filling hose
- 4-Venting handle to release the gas

- 5-Knurled nut to attach to ours standar Pulsation Dampers inflating gas valve
- 6-Venting closure ball
- 6.1-Retaining knurled nut balls
- 6.2-Transfer ball
- 7-Allen Screw
- 8-Pressure gage seal
- 9-"O"Ring(ref.HC2008 NBR)
- 9.1-Back up Ring(ref.HC8008 NBR)
- 10-Spring
- 11-Venting hole
- 12-Core depressor pin

MANOMETER SCALES	Drg.Nº(***))
End scale= 6 BAR	→***=006
16	016
25	025
60	060
160	160
250	250
400	400
600	600
1000	1000

NOTE: The scale end of the manometer should be approx. 30% higher than the value of the gas precharge.

HIDRACAR SA
 08295 S.VTE. CASTELLET (BARCELONA) SPAIN
 TEL. 34.93.8330252 FAX. 34.93.8331950

Customer	Customer Ref.	Drawn	Checked
Title OUR CHARGING & CONTROL GAS BLOCK FOR PULSATION DAMPERS AND ACCUMULATORS	Drg.No BV(***)A1TM	E.Ponsa Rev. 05	M.Carcaré Date 17.11.04 Scale 1:1