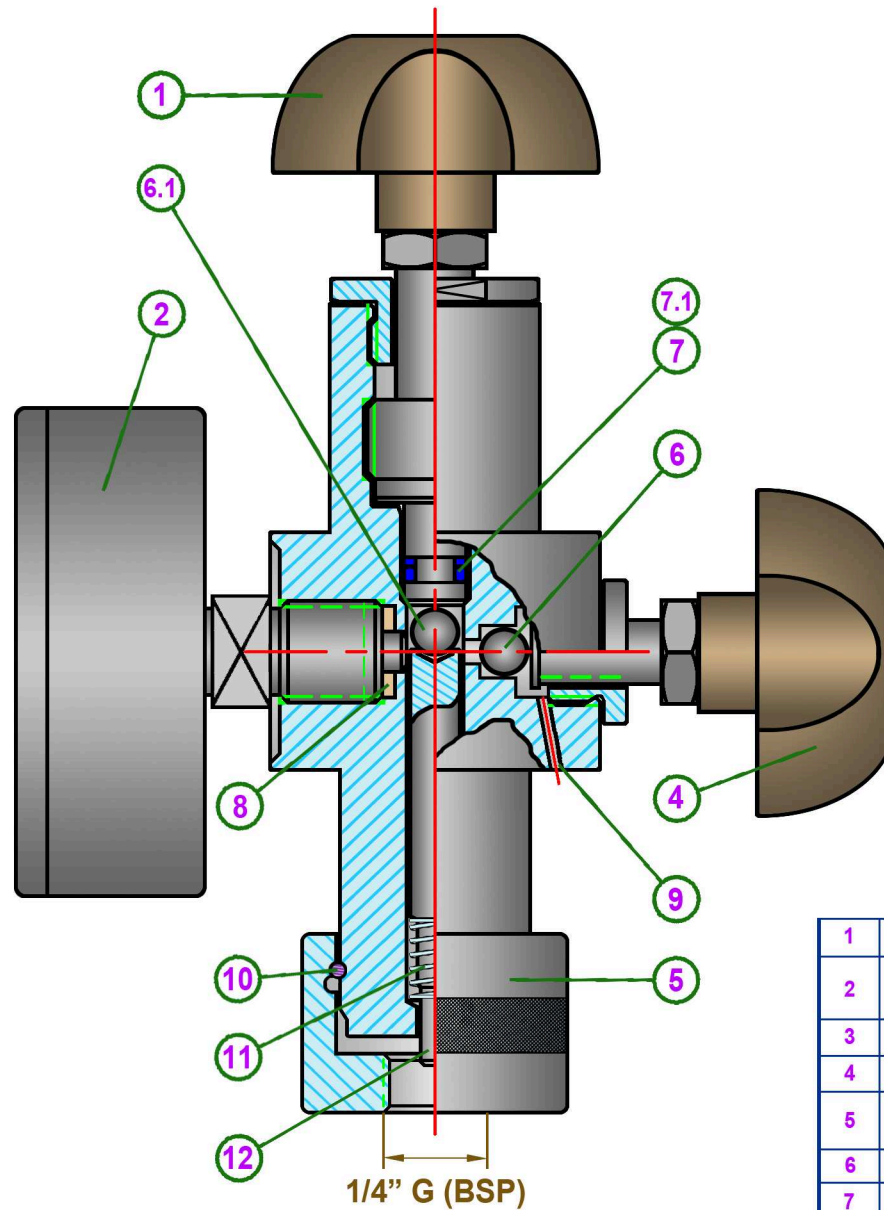


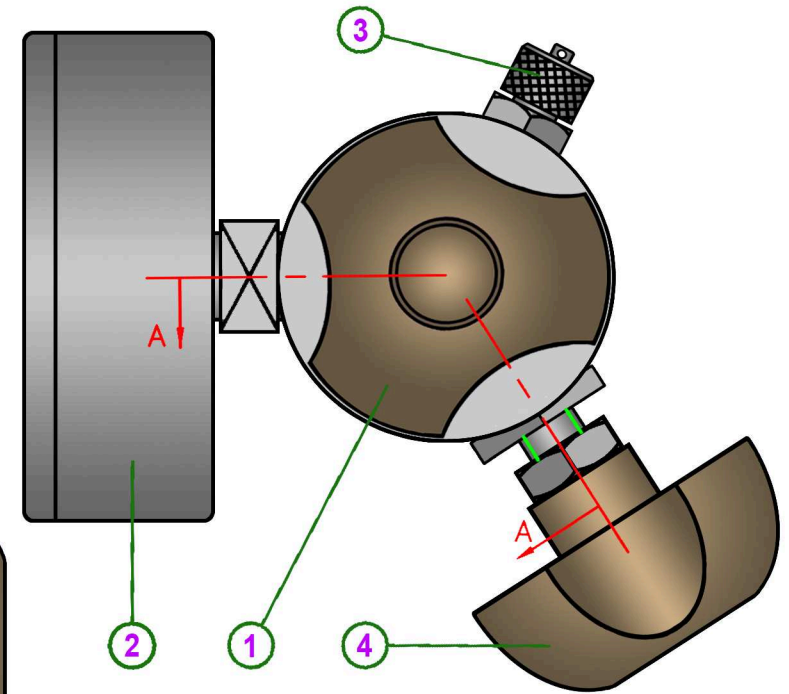


NOTE: The scale range of the pressure gauge should be approx. 30% higher than the value of the gas pre-charge.

PRESSURE GAUGE SCALE RANGE	GAS BLOCK REFERENCE CODE
6 bar	BV006A1TM
16 bar	BV016A1TM
25 bar	BV025A1TM
40 bar	BV040A1TM
60 bar	BV060A1TM
160 bar	BV160A1TM
250 bar	BV250A1TM
400 bar	BV400A1TM
600 bar	BV600A1TM
1,000 bar	BV1000A1TM



Section A - A



Body & nuts material:
1.0718 steel with electroless nickel plating.

1	DAMPENER / ACCUMULATOR CHARGING VALVE CORE DRIVER HANDLE		
2	PRESSURE GAUGE (WITH SCALE RANGE ACCORDING TO MAXIMUM CHARGING PRESSURE)		
3	GAS SUPPLY HOSE ATTACHMENT CONNECTION VALVE		
4	GAS PURGE RELEASE HANDLE		
5	DAMPENER / ACCUMULATOR GAS CHARGING VALVE KNURLED ATTACHMENT RING NUT		
6	PURGE SHUTTER VALVE BALL	6.1	TRANSFER BALL
7	O-RING (ref.: HC2008-N)	7.1	BACK UP RING (ref.: HC8008-N)
8	PRESSURE GAUGE SEAL	9	PURGE GAS EXHAUST HOLE
10	ATTACHMENT RING NUT RETAINING RING		
11	SPRING	12	VALVE CORE DEPRESSOR PIN



HIDRACAR S.A.

Pol. Ind. Bufalvent - c/ Ramón Farguell, 73
08243 Manresa (Barcelona) - SPAIN
www.hidracar.com - e-mail: hidracar@hidracar.com
Tel.: +34 93 833 02 52 Fax: +34 93 833 19 50

Customer

Customer ref.

Replaces drawing

BV(***)A1TM (Rev. 06)

Drawn by

E.Ponsa

Approved by

M. Carcaré

Title **CHARGING AND CONTROL GAS BLOCK FOR OUR PULSATION DAMPENERS AND ACCUMULATORS**

Drawing

BV(***)A1TM

Rev.

07

Date

26/04/17

Scale

1/1