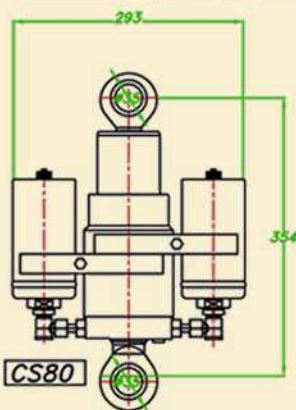
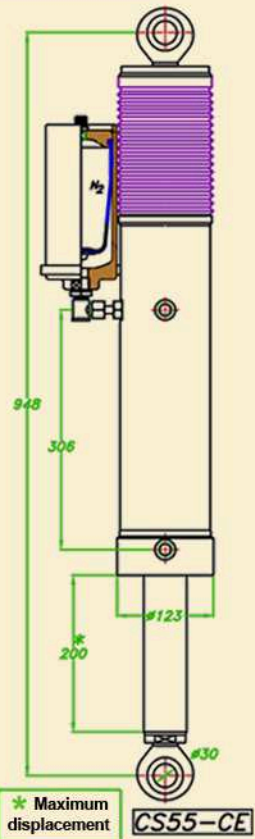
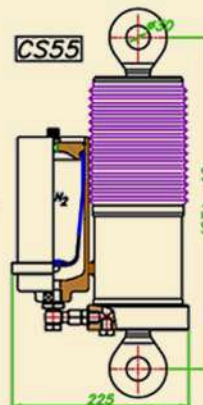
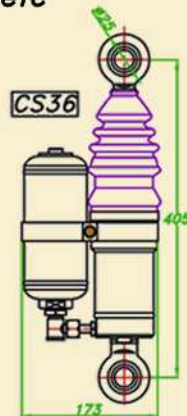


THE "IDEAL" OLEOPNEUMATIC SUSPENSION FOR ALL KIND OF AGRICULTURAL VEHICLES
WITH VARIABLE LOAD (ALL CYLINDERS INCORPORATE ONE OR TWO ACCUMULATORS)

GREAT DRIVING CONFORT, NOT COMPARED WITH ANY OF OTHER SUSPENSIONS

USED IN

- Liquid transport tankers
- Towages, trailers, etc



PATENTED

● MAXI. FORCES (F3) Kg-f			
CSS-55	CS-36	CS-55	CS-80
3500	3500	7500	7500

- applied in the cylinders anchor points
- (F3) INERTIA FORCE
- (F2) FORCE WITH A LOADED VEHICLE
- (Fm) FORCE WITH A HALF LOADED VEHICLE
- (F1) FORCE WITH AN EMPTY VEHICLE

L1=Reduction of total displacement suspension with an empty vehicle

L_m = Reduction of total displacement suspension with a half loaded vehicle

L2=Reduction of total displacement suspension with a full loaded vehicle

$L_t =$ Max. stroke suspension displacement

MAIN FEATURES

- * Very easy to install and 100% INDEPENDENT: no external source of pressure needed.
- * The difference between empty and loaded vehicle is only FROM 6 TO 8 CM
- THE SUSPENSION DO NOT BECOME HARDER when the vehicle changes from empty to loaded
- * Suitable for vehicles with a relation loaded/ empty equal or higher to 2,5
- * THE REBOUND EFFECT Produced by leaf or coil springs IS ELIMINATED

Working graphics for each type of cylinder

